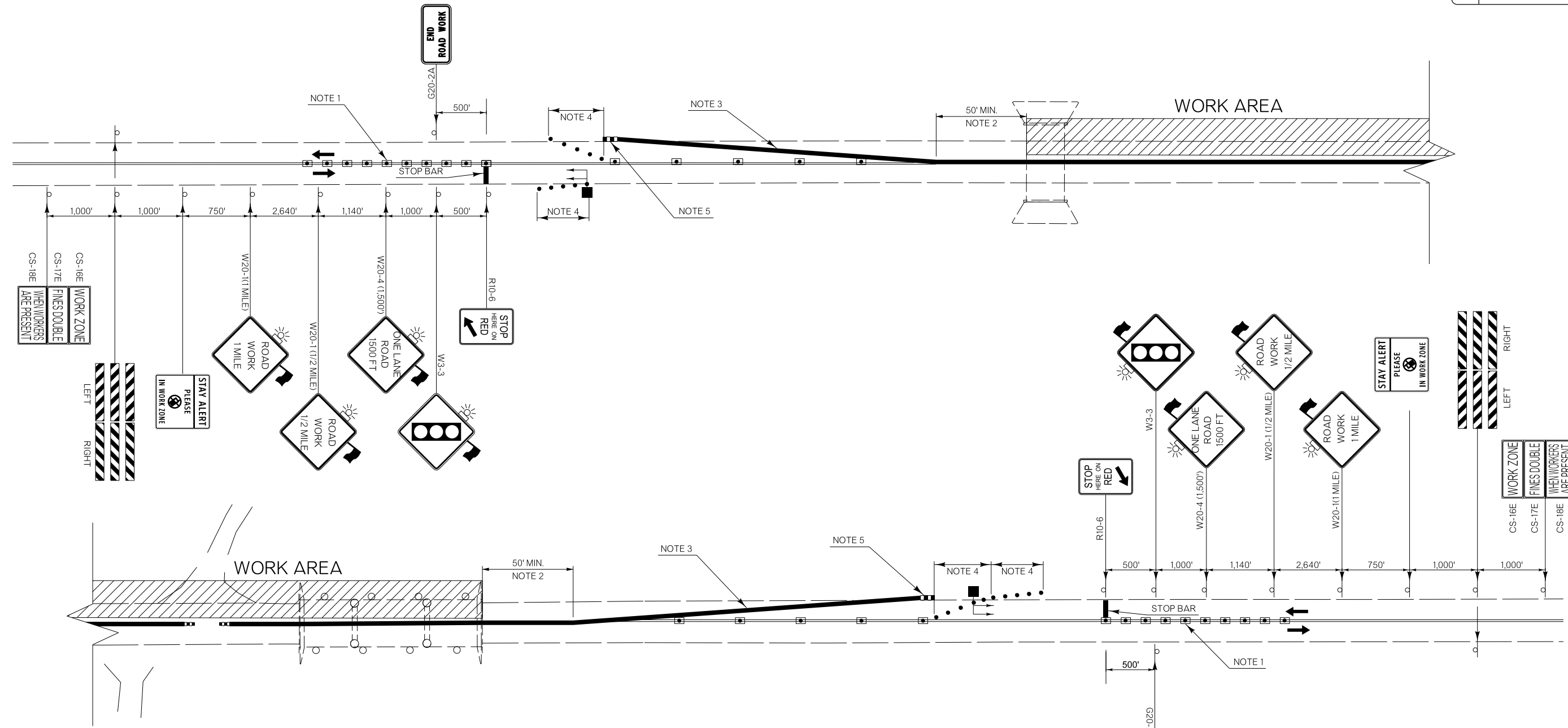


REVISIONS		
REV. NO.	DESCRIPTION	DATE



NOTE 1
 MAXIMUM SPACING BETWEEN CHANNELIZING DEVICES (FEET) SHALL BE TWICE THE POSTED SPEED LIMIT (M.P.H.) WITH THE FOLLOWING EXCEPTIONS. SPACING SHALL NOT EXCEED 50 FEET FOR CONES OR TUBE CHANNELIZERS. SPACING SHALL NOT EXCEED 75 FEET FOR CHANNELIZER CONES. SPACING SHALL NOT EXCEED 100 FEET FOR TYPE II BARRICADES, VERTICAL PANELS OR DRUMS.

NOTE 2
 A LONGITUDINAL BUFFER AREA, TO ALLOW WORKERS TIME TO EVACUATE THE WORK AREA, SHOULD BE PROVIDED. FOR GUIDELINES ON SETTING THE LENGTH OF THIS BUFFER, SEE STANDARD DRAWING TCS2-1-(LATEST REVISION). ACTUAL LENGTH SHALL BE DETERMINED BY FIELD CONDITIONS AND THE JUDGEMENT OF THE ENGINEER.

NOTE 3

SPEED*	FLARE RATE (MINIMUM)
40 M.P.H.	9 TO 1
45 M.P.H.	10 TO 1
50 M.P.H.	11 TO 1
55 M.P.H.	12 TO 1
60 M.P.H.	13 TO 1
65 M.P.H.	14 TO 1
70 M.P.H.	15 TO 1
75 M.P.H.	16 TO 1

* POSTED SPEED LIMIT PRIOR TO CONSTRUCTION

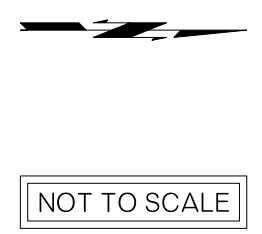
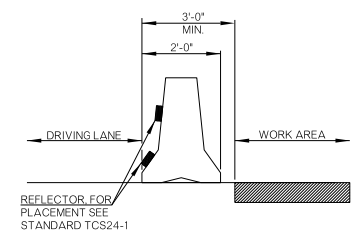
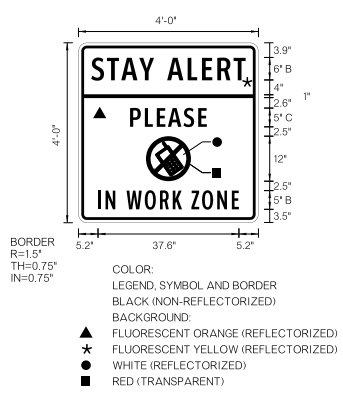
NOTE 4
 A MINIMUM OF FIVE (5) CHANNELIZING DEVICES SHALL BE PLACED THROUGH THIS AREA.

NOTE 5
 IF CLEAR ZONE CAN BE MET BY FLARING MEDIAN BARRIER THE CONSTRUCTION ZONE IMPACT ATTENUATORS MAY BE OMITTED. SEE FLARE RATE TABLE.

SIGNALS SHALL BE INSTALLED AND OPERATED IN ACCORDANCE WITH PART IV OF THE MANUAL ON UNIFORM TRAFFIC CONTROL DEVICES. TEMPORARY TRAFFIC CONTROL SIGNALS SHALL MEET THE PHYSICAL DISPLAY AND OPERATIONAL REQUIREMENTS OF CONVENTIONAL TRAFFIC SIGNALS.

THE INSTALLATION AND TIMING OF SIGNALS SHALL BE APPROVED BY THE DIVISION TRAFFIC ENGINEER PRIOR TO SIGNALS BEING PLACED IN OPERATION.

ALL CONFLICTING PAVEMENT MARKINGS AND RAISED PAVEMENT MARKER REFLECTORS BETWEEN THE ACTIVITY AREA AND THE STOP LINE SHALL BE REMOVED. AFTER COMPLETION OF THE WORK, THE STOP LINES AND OTHER TEMPORARY INAPPLICABLE PAVEMENT MARKINGS SHALL BE REMOVED.



DIVISION 7 US-277	COMANCHE COUNTY	DETAIL: CLD 07/17
TRAFFIC CONTROL DETAIL		CHECK: GF 07/17
1 OF 2		ENGINEER: KCD 07/17
STATE OF OKLAHOMA		GROUP: ABRAHAM MAAROUF
DEPARTMENT OF TRANSPORTATION		EM: MAAROUF
JOB/PIECE NO. 27968(04)		SHEET NO. T001